

## Infrastructure, Bridges and Tunnels

# INFRA-KIT

INFRA-KIT is a modular system for infrastructure projects, offering maximum flexibility with a minimal number of required system parts. Its adaptable configuration delivers higher productivity in any jobsite condition, including tight or congested areas.

At the same time, INFRA-KIT provides strength and is available in three versions, L & M for moderately heavy applications and H, suitable for carrying the heaviest loads.

### Cost-Effective Infrastructure Forming with Stock Components

- › Designed with fewer components, minimal planning requirements and minimal custom components required.

### Improve Productivity with Efficient Pre-assembly Options

- › Pre-assembly boosts productivity, especially on congested or space-restricted jobsites.

### The Right Beam for Every Application

- › Multiple beam lengths available across all three load classes to match a wide range of project demands.

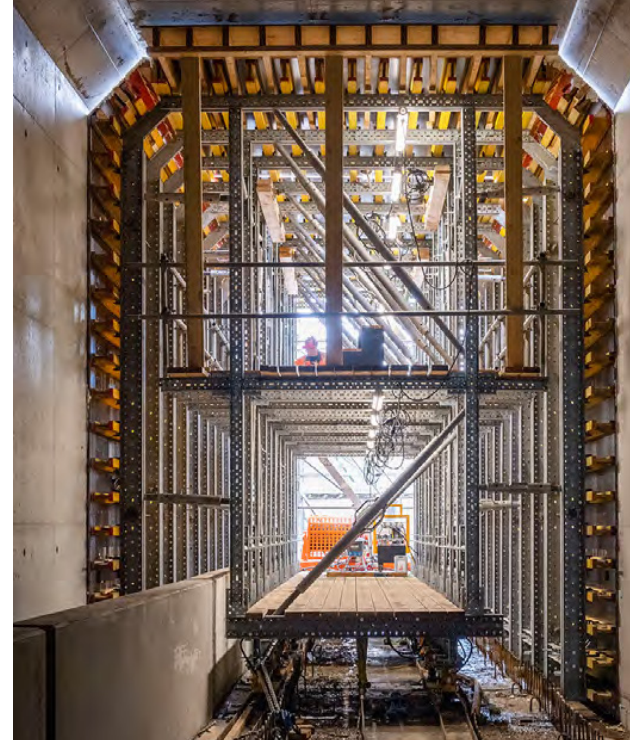
### High-Capacity Shoring

- › Engineered to carry significant loads while reducing the amount of material required on site.

### Custom Solutions

- › Multiple applications and solutions for every unique project need.

*Aluma Systems provides full-service engineering and all-encompassing Forming & Shoring solutions for Industrial and Infrastructure markets, optimizing productivity, ensuring safety, and addressing the unique challenges of each project.*



# INFRAKIT

## Overview of Applications

**Maximum flexibility with a minimal number of required system parts**

### Applications based on the INFRA-KIT modular system



**Heavy Duty Shoring**



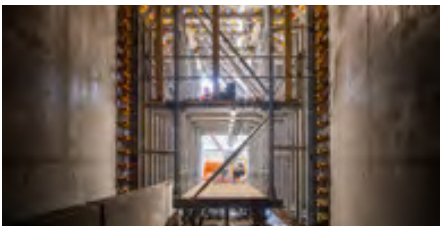
**Parapet Traveller**



**Bridge Bracket**



**Tunnel Construction**

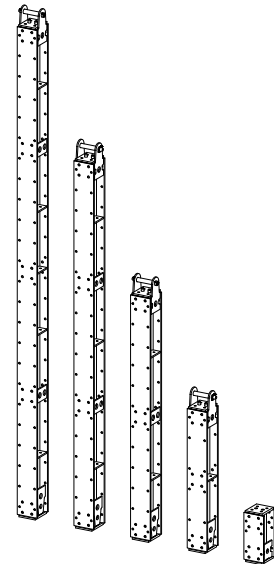


**Tunnel Construction**

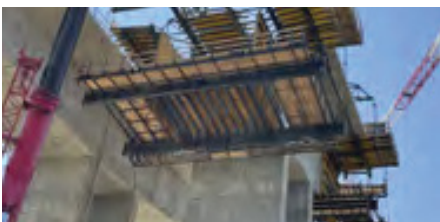


**Incremental Launching**

INFRA-KIT Beams and Walers



### Applications in cooperation with Strukturax



**Balanced Cantilever**



**Bridge Launches**

Aluma Systems is part of the BrandSafway family of companies, a global leader serving industrial, commercial, and infrastructure markets with access, scaffolding, forming, shoring, and industrial solutions for 30,000+ customers worldwide.