

BrandTech® Suite of Welding Machines

The best stud welding machines for projects in the refining, marine, mining, chemical, industrial, construction, and fabrication markets.



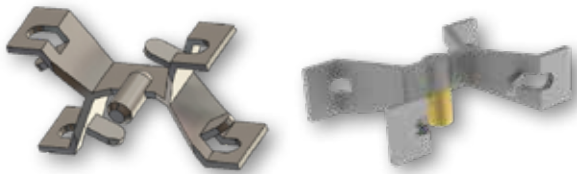
Technical Specifications	BT-PW1600	BT-PW800	BT-PW Lightning 550i
Welding Range	Ø #4 – 1" (3 – 25 mm)	Ø #4 – 0.5" (3 – 12 mm)	Ø #4 – 0.375" (3 – 10 mm)
Welding Rate	16 welds/min	12 welds/min	8 welds/min
Welding Guns	2	1	1
Weight	600 lbs (272 kg)	225 lbs (102 kg)	125 lbs (56 kg)
Dimensions (LxWxH)	38" x 25" x 42" (965 x 635 x 1000 cm)	24" x 13" x 20" (609 x 330 x 508 cm)	25" x 23" x 36" (635 x 584 x 914 cm)
Primary Power	400, 480, 600 VAC 3-Phase (132 kVA)	400, 480, 600 VAC 3-Phase (58 kVA)	120, 240 VAC Single-Phase (25 kVA)
Frequency	50/60 Hz	50/60 Hz	60 Hz
Input Current	60 A	30 A	20 A
Welding Current	1600 A	800 A	550 A
Primary Plug	60 A, four prong	30 A, four prong	NEMA 5-20R (120 V) or NEMA 6-50 (240 V)
Current Adjustment Range	200 – 1600 A	25 – 800 A	25 – 550 A
Welding Time	115 – 2000 ms	5 – 1000 ms	5 – 300 ms
Welding Lead Length	400 ft (120 m)	400 ft (120 m)	100 ft (30 m)

Use the entire suite of BrandTech solutions with all of our welding machines.



Power Distribution Unit

Reduce complexity and increase savings. With the BrandTech® Power Distribution Unit (PDU), equipment costs are reduced by as much as 40%. Plus, the new design has eliminated obsolete components for simplified installation and maintenance as well as improved safety.



Quik-X™ and Quik-X PRO™ Refractory Anchoring Systems

BrandSafway's Quik-X™ and Quik-X PRO™ are the best anchoring systems on the market today. Designed with versatility, productivity and durability in mind, both BrandTech anchoring systems improve the safety, speed, strength and accuracy of your refractory work.



Precision Layout

With BrandTech Precision Layout, simply locate just two reference points and start welding. Easily make adjustments by moving the device nearer or farther from the surface. Gun mount or static mount options offer flexibility and convenience.

BrandSafway provides access and industrial service solutions with turnkey installation, engineering support and safety training.

Ready to Deliver

+Safety
First and Foremost

+Expertise
Industry-Leading Depth/Range

+Solutions
The Broadest Portfolio

+Productivity
Increased at Every Level

+Local
Management and Labor

For more information
contact us at
BrandTech@BrandSafway.com

BrandTech
BY BRAND SAFWAY

BRAND SAFWAY