

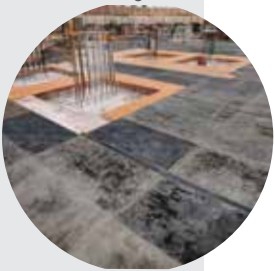
FORMING AND SHORING

Rental Solutions



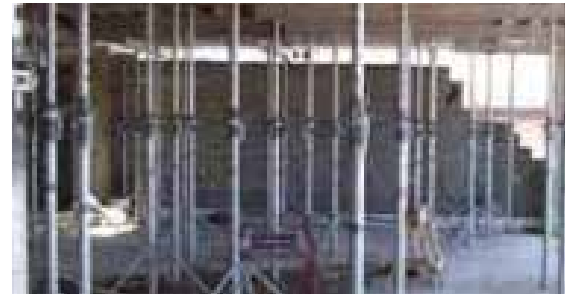
Wall Formwork

- › Easy handling, transport, and setup
- › Durable for long-term use
- › Adaptable to various wall configurations
- › Increases ROI across projects
- › Integrates with other system



Slab Formwork

- › Supports heavy loads
- › Cost-effective for multiple uses
- › Flexible for various shapes and sizes
- › Reusable with high-quality materials



Climbing Formwork

- › Reduces crane use
- › Quick repositioning for faster pours
- › Ideal for high-rise/complex projects
- › Supports large concrete pours
- › Ensures precise concrete finishes



Shoring Solutions

- › Hi-Load: Versatile, robust system
- › ProShore: Improves productivity and reduces costs
- › Aluma Frame: Easy setup and worker movement
- › GASS: Lightweight, modular, easy to erect



▶ FORMING AND SHORING Rental Solutions

BRAND SAFWAY®



Heavy Duty Post Shores

- › 14,000 lbs. load capacity
- › Components can be disassembled for maintenance
- › Quick height adjustment and quick strip pin for easy removal



Aluma BEAM

- › Heavy-duty plastic nailer strips lasts 4x longer than wood
- › Versatile and compatible with most other concrete construction systems available in North America
- › Strong, long lasting, lightweight aluminum alloy
- › Greater strength-to-weight ration than steel or wood



Aluma Frame

- › High strength to weight ratio
- › Flown in large modular tables
- › Compatible with the full range of Aluma beams and stringers, plus a full list of accessories and components
- › Available in 2' and 4' widths



Aluma Hi-Load

- › High-capacity frames can handle extreme job site conditions
- › Compatible with the full range of Aluma beams and stringers
- › Full list of accessories
- › Easy to install



Global Corporate Headquarters
600 Galleria Parkway SE, Suite 1100
Atlanta, GA 30339

844-SCAF-RNT (722-3768)
BrandSafway.com/Rentals